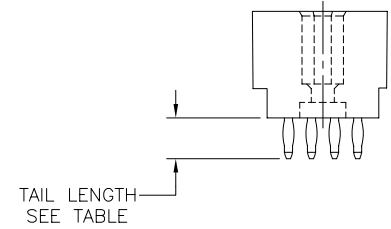
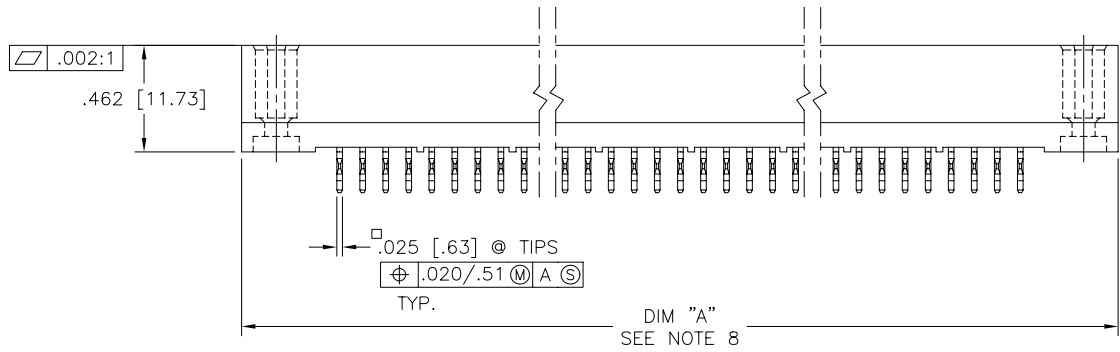
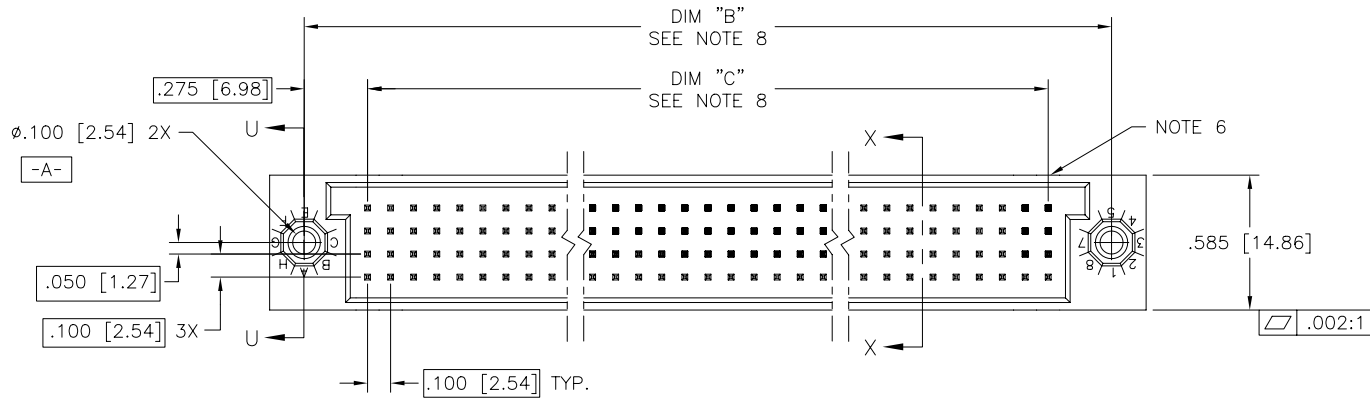


PRODUCT NUMBER  
SEE TABLE



FCI  
FCIconnect.com

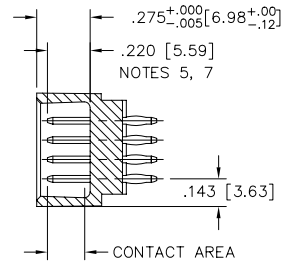
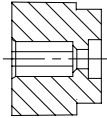
Copyright FCI

mat'l. code		surface		tolerance		projection		product family	
-		ISO 1302 ✓		ISO 406 ISO 1101		INCH/MM		HPC	
ltr		ecn no dr		date		tolerances unless otherwise specified		title	
B	v40941	PDP	6/01/94	angles	linear	.xx ±.01/.3	INCH/MM	4 ROW VERTICAL HEADER	
C	v50207	LSS	2/17/95			.xxx ±.005/.13		MULTI-PLATED P.F. PINS, 0 G.P.	
D	v90011	HTB	1/06/99	σ±2'		.xxxx ±.0020/.051	scale 1:1	dwg no sheet 1 of 4 size	
E	v00276	JWS	2/02/00	dr	P. PARSONS	4/12/94	FCI	50760 A3	
F	v05-0776	DCH	8/15/05	enr	J. AFTON	4/11/95		type Product Customer Drawing	
G	v05-1048	DAI	11/16/05	chr	G. PETERS	4/15/94			
H	M06-0261	AEA	7/10/06	appd	S. CLARK	4/18/94			
sheet	revision	H	H	H	H				
index	sheet	1	2	3	4				

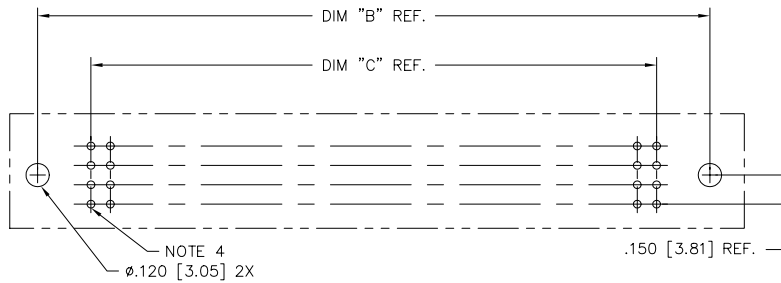
form: A3

PRODUCT NUMBER  
SEE TABLE

SECTION U-U



SECTION X-X



RECOMMENDED PCB LAYOUT  
(ALL HOLES LOCATED ON .100/2.54 GRID  
UNLESS OTHERWISE SPECIFIED)

NOTES:

① PRODUCT NUMBERING CODE:  
50760 - X YYY Z LF  
LEAD FREE (OPTIONAL)  
TAIL LENGTH (SEE TABLE)  
NO. OF POSITIONS (NOTE 2)  
PLATING (SEE TABLE)  
BASE NUMBER

PRODUCT NUMBERING CODE FOR  
SELECT LOAD PART NUMBERS:  
50760 - XXYYY LF  
LEAD FREE (OPTIONAL)  
SEQUENCE NUMBER  
ALWAYS "XX"  
BASE NUMBER

② THIS PRODUCT IS CONFIGURED IN SIZES OF 6 thru 80  
COLUMNS IN INCREMENTS OF ONE.  
i.e.: 6,7,8,9,.....79,80.

③ HOUSING MATERIAL: GLASS AND MINERAL FILLED  
HIGH TEMP. THERMOPLASTIC, FLAME RETARDANT PER  
UL94V-0. COLOR: BLACK.  
PIN MATERIAL: PHOS BRONZE

④ ø.0453/1.151 DRILLED HOLE PLATED WITH .0003/.007 MIN.  
SnPb OVER .001/.03 to .003/.08 Cu. PLATING TO  
ACHIEVE A ø.040±.003/1.02±.08 HOLE.

⑤ TO ASSURE PROPER INSTALLATION: TOOLING, AS  
SPECIFIED IN INSTRUCTION MANUAL 155915-001 MUST  
BE USED. PIN MATING LENGTH WILL BE ±.002/.05  
AFTER INSTALLATION.

⑥ COMPANY NAME, PART NUMBER AND LOT CODE TO APPEAR  
ON THIS SURFACE PER BUS-22-108.

⑦ REFERENCE 50807 FOR F.M.L.B. AVAILABLE OPTIONS  
AND WORKSHEET.

⑧ LENGTH DIMENSION CALCULATIONS:  
DIM A: .100/2.54 X NO. OF COLUMNS + .750/19.05  
DIM B: .100/2.54 X NO. OF COLUMNS + .450/11.43  
DIM C: .100/2.54 X NO. OF COLUMNS - .100/2.54

9. THIS PRODUCT (WITH "LF" SUFFIX) MEETS EUROPEAN UNION DIRECTIVES  
AND OTHER COUNTRY REGULATIONS AS DESCRIBED IN GS-22-008.

10. THIS HOUSING WILL WITHSTAND EXPOSURE TO 260 °C PEAK TEMPERATURE  
FOR 10-30 SECONDS IN A CONVECTION, INFRA-RED OR VAPOR PHASE  
OVEN.



FCIconnect.com

Copyright FCI

mat'l. code		surface		tolerance		projection		product family	
-		ISO 1302 ✓		ISO 406 ISO 1101		⊕		HPC	
ltr		ecn no dr		date		tolerances unless otherwise specified		title	
H						.xx ±.01/.3 .xxx ±.005/.13 σ±2' .xxxx ±.0020/.051		4 ROW VERTICAL HEADER MULTI-PLATED P.F. PINS, 0 G.P.	
						INCH/MM		dwg no	
						scale 1:1		sheet 2 of 4 size	
		dr		P. PARSONS 4/12/94		FCI		50760 A3	
		enr		J. AFTON 4/11/95					
		chr		G. PETERS 4/15/94					
		appd		S. CLARK 4/18/94				type Product Customer Drawing	
sheet index		revision sheet							

PRODUCT NO.	NUMBER OF POSITIONS	PLATING: CONTACT AREA	MIN PLATING: PRESS-FIT AREA	MIN PLATING: TAIL AREA	TAIL LENGTH REF
50760-AYYYYA	YYY	30u"/0.76u Au	40u"/1.02u SnPb	40u"/1.02u SnPb	.177 / 4.50
50760-AYYYYG	YYY	30u"/0.76u Au	40u"/1.02u SnPb	40u"/1.02u SnPb	.250 / 6.35
50760-BYYYYA	YYY	30u"/0.76u GXT	40u"/1.02u SnPb	40u"/1.02u SnPb	.177 / 4.50
50760-BYYYYALF	YYY	30u"/0.76u GXT	40u"/1.02u Sn	40u"/1.02u Sn	.177 / 4.50
50760-BYYYYG	YYY	30u"/0.76u GXT	40u"/1.02u SnPb	40u"/1.02u SnPb	.250 / 6.35
50760-BYYYYGLF	YYY	30u"/0.76u GXT	40u"/1.02u Sn	40u"/1.02u Sn	.250 / 6.35
50760-CYYYYC	YYY	30u"/0.76u Au	40u"/1.02u SnPb	30u"/0.76u Au	.533 / 13.54
50760-CYYYYD	YYY	30u"/0.76u Au	40u"/1.02u SnPb	30u"/0.76u Au	.733 / 18.62
50760-DYYYYC	YYY	30u"/0.76u GXT	40u"/1.02u SnPb	30u"/0.76u GXT	.533 / 13.54
50760-DYYYYCLF	YYY	30u"/0.76u GXT	40u"/1.02u Sn	30u"/0.76u GXT	.533 / 13.54
50760-DYYYYD	YYY	30u"/0.76u GXT	40u"/1.02u SnPb	30u"/0.76u GXT	.733 / 18.62
50760-DYYYYDLF	YYY	30u"/0.76u GXT	40u"/1.02u Sn	30u"/0.76u GXT	.733 / 18.62
50760-XX003	180	30u"/0.76u GXT	30u"/0.76u GXT	Au FLASH	SEE SHEET 4
50760-XX003LF	180	30u"/0.76u GXT	30u"/0.76u GXT	Au FLASH	SEE SHEET 4



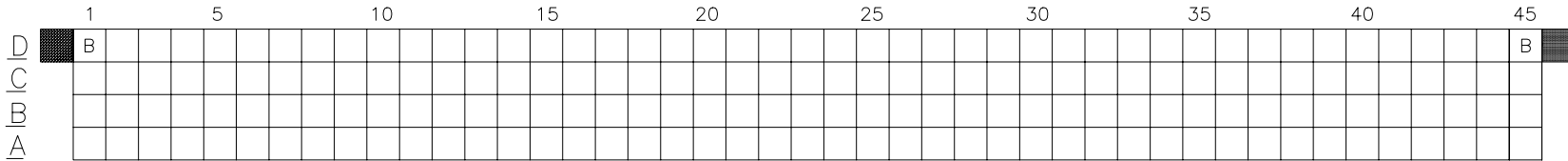
FCIconnect.com

Copyright FCI

mat'l. code		surface		tolerance		projection		product family	
-		ISO 1302 ✓		ISO 406 ISO 1101				HPC	
ltr	ecn	no	dr	date		tolerances unless otherwise specified		title	
H						angles linear .xx ±.01/.3 .xxx ±.005/.13 .xxxx ±.0020/.051		INCH/MM scale 1:1 4 ROW VERTICAL HEADER MULTI-PLATED P.F. PINS, 0 G.P.	
				dr	P. PARSONS	4/12/94			dwg no
				enr	J. AFTON	4/11/95			sheet 3 of 4 size
				chr	G. PETERS	4/15/94			50760
				appd	S. CLARK	4/18/94			A3
sheet index	revision sheet								type Product Customer Drawing

PRODUCT NUMBER  
50760-XX003  
50760-XX003LF

SPECIAL LOAD 50760-XX003 AND 50760-XX003LF SHOWN ON THIS SHEET



ITEM KEY	SIGNAL DATA			
	SIZE 4 x 45	TOTAL NO. OF POSITIONS -180	NO. OF POSITIONS LOADED - 180	
	PLATING - 30u"/.76u GXT	PRESS FIT STYLE		
	QTY.	MATING LENGTH	TAIL LENGTH	TOTAL PIN LENGTH
A	178	.180 / 4.57	.557 / 14.15	.924 / 23.47
B	2	.210 / 5.33	.587 / 14.91	.984 / 24.99

PLATING NOTE: POST-PLATED

- ALL POSITIONS ARE LOADED WITH "A", EXCEPT AS SHOWN.
- COLUMN 1, ROW A IS DESIGNATED AS SIGNAL PIN 1, AS VIEWED FROM THE MATING FACE.

mat'l. code		surface		tolerance		projection		product family	
-		ISO 1302 ✓		ISO 406 ISO 1101				HPC	
ltr	ecn	no	dr	date	tolerances unless otherwise specified		title		
H					angles	linear	INCH/MM		4 ROW VERTICAL HEADER
						.xx ±.01/.3	scale 1:1		MULTI-PLATED P.F. PINS, 0 G.P.
					σ±2'	.xxx ±.005/.13			dwg no
						.xxxx ±.0020/.051			sheet 4 of 4 size
					dr	P. PARSONS	4/12/94		50760
					enr	J. AFTON	4/11/95		A3
					chr	G. PETERS	4/15/94		
					appd	S. CLARK	4/18/94		
sheet	revision							type Product Customer Drawing	
index	sheet								